



SUPRIYA LIFESCIENCE LTD.

Creating true values that bind global health

Date: December 17, 2024

To,

BSE Limited Phiroze Jeejeebhoy Towers, Dalal Street, Mumbai- 400 001 Scrip Code: 543434	National Stock Exchange of India Limited Exchange Plaza, Plot no. C/1, G Block, Bandra-Kurla Complex Bandra (E), Mumbai - 400 051 NSE Symbol: SUPRIYA
---	---

Dear Sir/Madam,

Subject: Press Release- Supriya Lifescience Ltd Inaugurates State-of-the-Art Module E Production Block at Lote Parshuram, Maharashtra

Pursuant to the relevant provisions of the SEBI Listing Regulations, we are enclosing herewith Press Release “Supriya Lifescience Ltd Inaugurates State-of-the-Art Module E Production Block at Lote Parshuram, Maharashtra”.

Request you to kindly take the same on record.

Thanking you,

For Supriya Lifescience Limited

Shweta Singh
Company Secretary & Compliance Officer
Membership No.: A44973

Corporate office : 207/208, Udyog Bhavan, Sonawala Road, Goregaon (East), Mumbai – 400 063. Maharashtra, India.
Tel: +91 22 40332727 / 66942507 Fax : +91 22 26860011 GSTIN: 27AALCS8686A1ZX
CIN: L51900MH2008PLC180452 E-mail: supriya@supriyalifescience.com Website: www.supriyalifescience.com

Factory : A-5/2, Lote Parshuram Industrial Area, M.I.D.C. Tal.– Khed, Dist. – Ratnagiri, Pin :415 722, Maharashtra, India.
Tel: +91 2356 272299 Fax: +91 2356 272178 E-mail: factory@supriyalifescience.com

GOVT. RECOGNISED EXPORT HOUSE



SUPRIYA LIFESCIENCE LTD.

Supriya Lifescience Ltd Inaugurates State-of-the-Art Module E Production Block at Lote Parshuram, Maharashtra

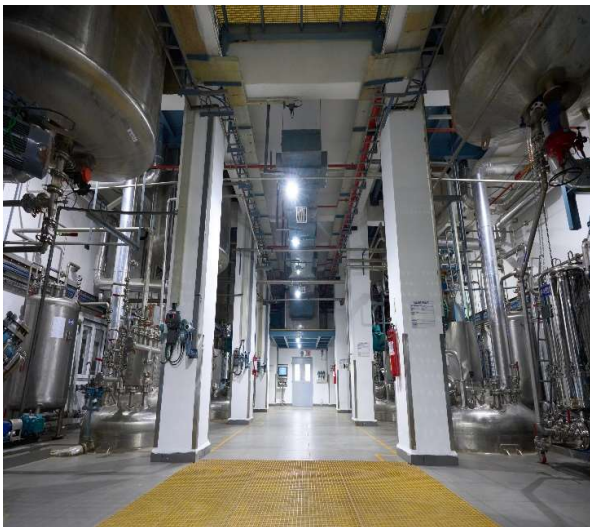
Mumbai, 17th December 2024: Supriya Lifescience Ltd (SLL), a leader in the pharmaceutical industry, has taken another significant step on its ambitious growth trajectory with the inauguration of its new multipurpose Active Pharmaceutical Ingredients (APIs) production block, Module E, at the Lote Parshuram site. The facility, developed with an investment of approximately **₹125 crore**, adds a substantial capacity of **335 kiloliters** to the company's operations. This expansion boosts our Lote Parshuram capacity by over **55%**, increasing it from **597 KLPD to 932 KLPD**.

The new production block is designed to support SLL's strategic focus on expanding its R&D capabilities and scaling up its pipeline of innovative products. Several new products in niche therapeutic areas are nearing the commercialization stage, reinforcing SLL's commitment to achieving a leadership position in these markets through efficient processes and backward integration.

Some of the salient features of the facility are:

- ✓ The facility is tailored to support the company's backward integration model, ensuring economies of scale and a competitive edge
- ✓ Spread across 5,000 square meters and structured over four levels, the facility enables efficient operations and safe workflows
- ✓ The facility houses 33 reactors, comprising stainless steel and glass-lined varieties, with capacities ranging from 1.6 KL to 16 KL
- ✓ The design leverages gravity-based process flows to enhance safety, maintain product integrity, and optimize efficiency
- ✓ Incorporating closed-system handling at critical stages, the facility is equipped with process control automation systems and material handling systems to ensure compliance with the latest quality standards
- ✓ The facility is equipped to handle a variety of unit processes and operations, making it adaptable to future needs.

Dr. Satish Wagh, Executive Chairman & WTD, Supriya Lifescience Ltd, commenting on the occasion, said, - “We are excited to inaugurate our new manufacturing Module E block today. With the latest technologies and our team’s dedication, we are poised to elevate product quality, ensure efficiency through backward integration, and meet growing global demand. Module E is a testament to our strategic focus on innovation and sustainability, serving as a key driver of growth while reducing dependence on imports. As SLL continues to strengthen its infrastructure and expand its product portfolio, the company remains dedicated to setting new benchmarks in the pharmaceutical industry and delivering value to its stakeholders”



About Supriya Lifescience Ltd: Supriya Lifescience Ltd., a world-renowned producer of active pharmaceutical ingredients, was founded in 1987. Our cutting-edge facility has certifications from Health Canada, EUGMP, EDQM, USFDA, and NMPA. The company is headquartered in Mumbai, India, and our facility is located in Khed, District Ratnagiri. Our globally compliant facilities (EMA, US FDA, WHO, PMDA, TGA, KFDA, ANVISA) are supported by robust R&D, eight active CEPs, and fourteen active USDMFs. EHS requirements and ethical principles guide our core business. The company's primary focus is to build intermediates and APIs for innovators and generic firms. We also exclusively collaborate with partners in the capacity of CMOs.

Investor Relations Advisors: Orient Capital

Prachi Ambre
Contact No: +91 83559 85370
E-mail id: prachi.ambre@linkintime.co.in

Irfan Raeen
Contact No: +91 97737 78669
E-mail id: irfan.raeen@linkintime.co.in

Public Relations (PR) Team: Dentsu Creative PR

Abhishek Chawande
Contact No: +91 96645 16774
E-mail id: Abhishek.Chawande@dentsu.com

Sanjukta Ghadge
Contact No: +91 98926 89895
E-mail id: Sanjukta.ghadge@dentsu.com